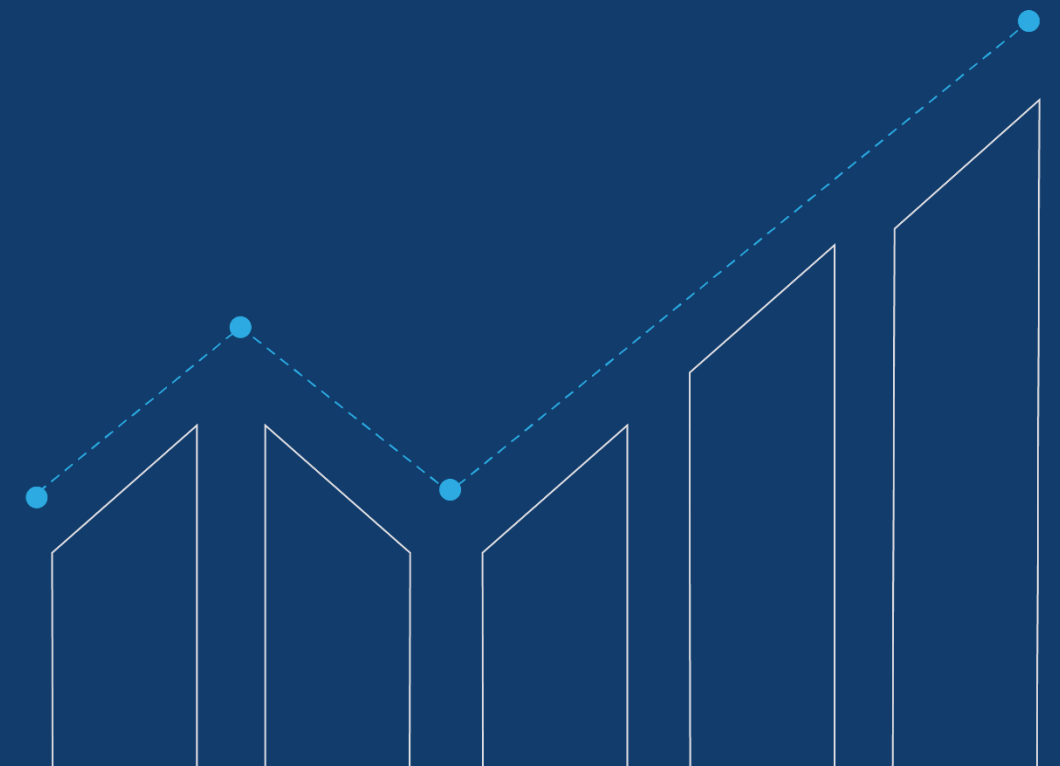






Why InCadCam?

InCadCam wants to provide you new possibilities, allowing your lab to *increase* its in-house milling capacities.

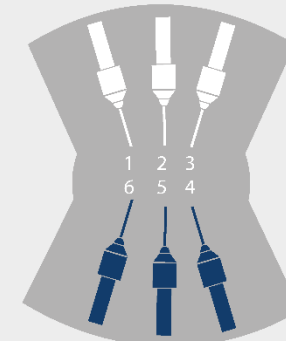




How Incadcam will do that?



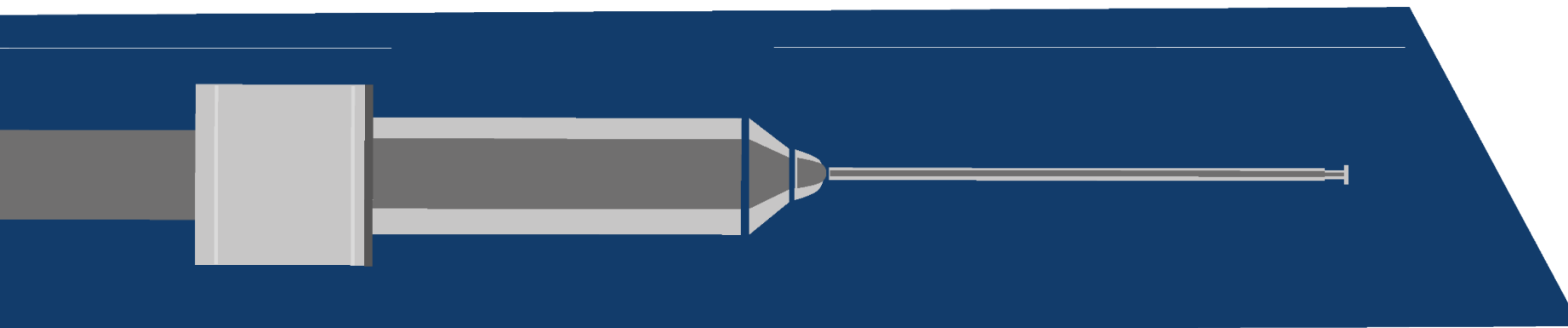
Milling strategy that activates special kit of milling tools.



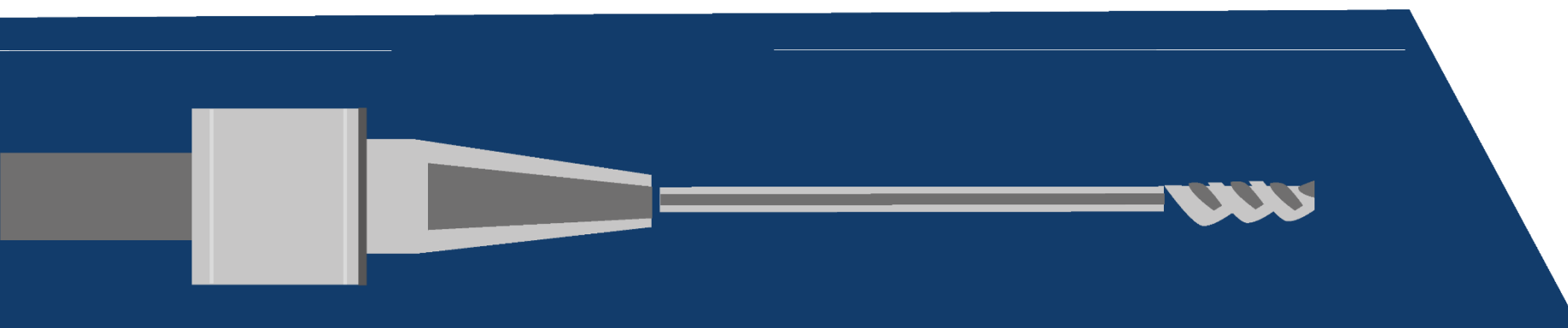
Kit of *straight rotos* that allows a better milling process on 90° angles.



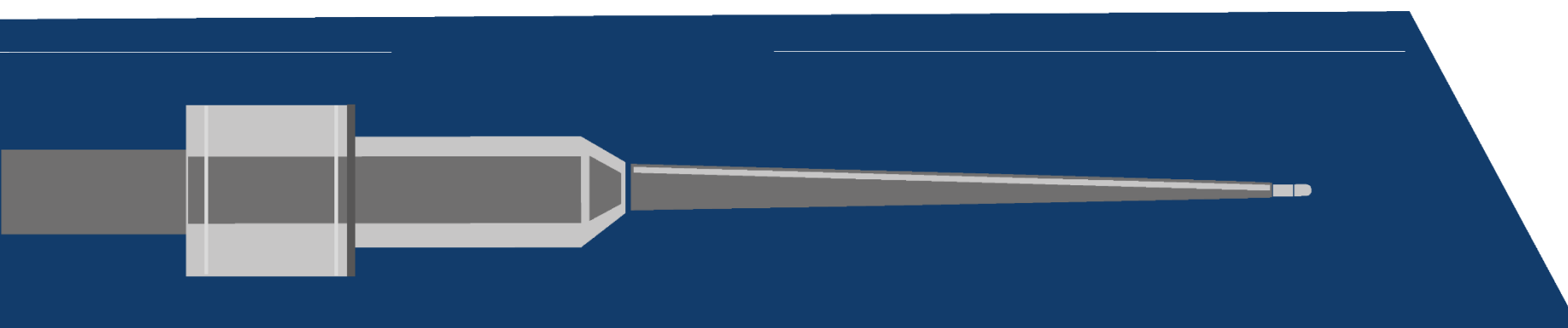
Specially designed *libraries* based on any implant platform you need.



ROTO RFID 0,6MM ST - COD. 751002



ROTO RFID 1,2MM ST - COD. 751001



ROTO HD 0,3MM - COD. 760607

Where

do I buy this
kit of straight rutos?

*Directly from
your AG dealer.*

What can be milled with **Incadcam?**

ceramill®



zirconia



sintron



peek



wax



motion 2



matik



mikro 4X



mikro 5X



mikro ic



Where
incadcam
can be used?

What can be done with **Incadcam?**



Produce *customized* abutments for any implant platform.



Produce your own *scanbody* with in-house technology.

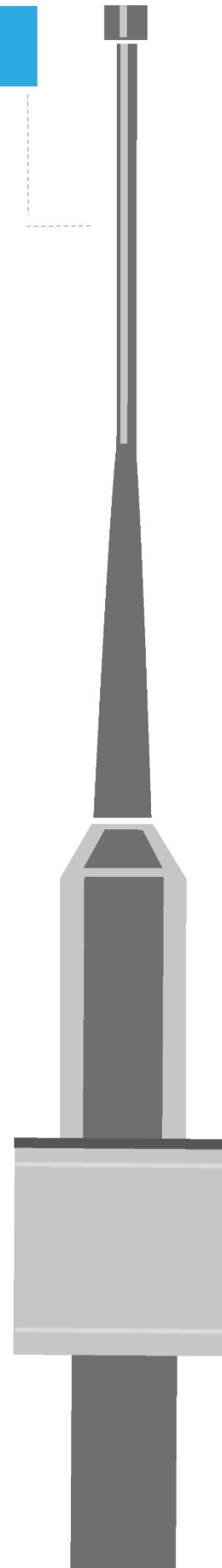


Mill *angulated* channels.

What about the *angulated channels?*

incadcam

NEW



If your software is **version 3.14** or above, you will be able to mill **angulated abutments** directly on implants.

To make your life easier, a **1.5mm** T-Shape roto was developed and it's available from your AG Dealer.

Protection *plan* incadcam



Protection Plan is a support and helpdesk service offered by our team.

Why should I have InCadCam's Protection Plan?

To have access to the following services:

- Add-on or libraries reinstallations
- Updates or activations needed
- Problems or doubts with libraries (exclusively for InCadCam's libraries)
- Support on scanbody development on CAM
- Any other matters regarding InCadCam or its libraries.

Protection *plan* incadcam



What is the difference between Amann Girrbach's Protection Plan and InCadCam's?

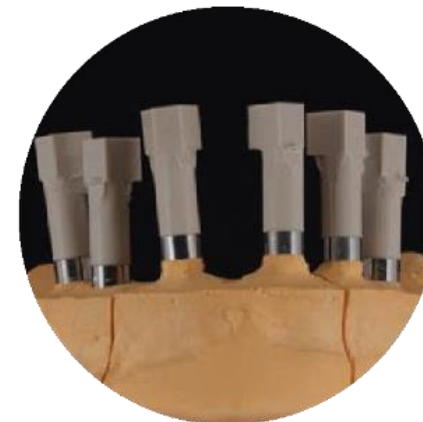
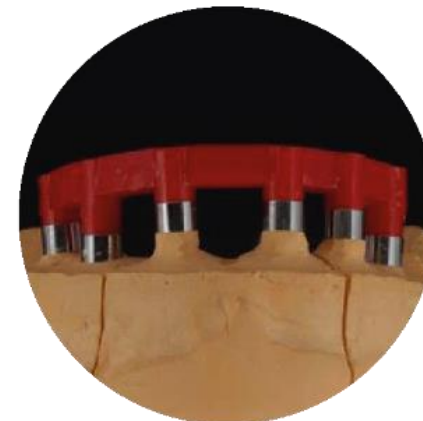
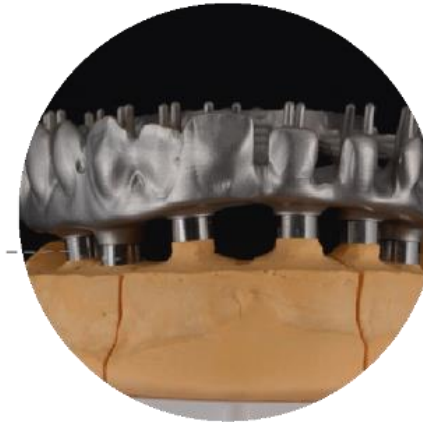
Amann Girrbach's Protection Plan is focused on software development updates and support, while InCadCam's is focused on CAM, more specifically on InCadCam's libraries and add-on updates and reinstallations.

How long is the Protection Plan valid?

InCadCam's Protection Plan is valid for one year and can be renewed from your local dealer or sales representative.

Can you
show me
some
examples?

incadcam



Libraries Incadcam





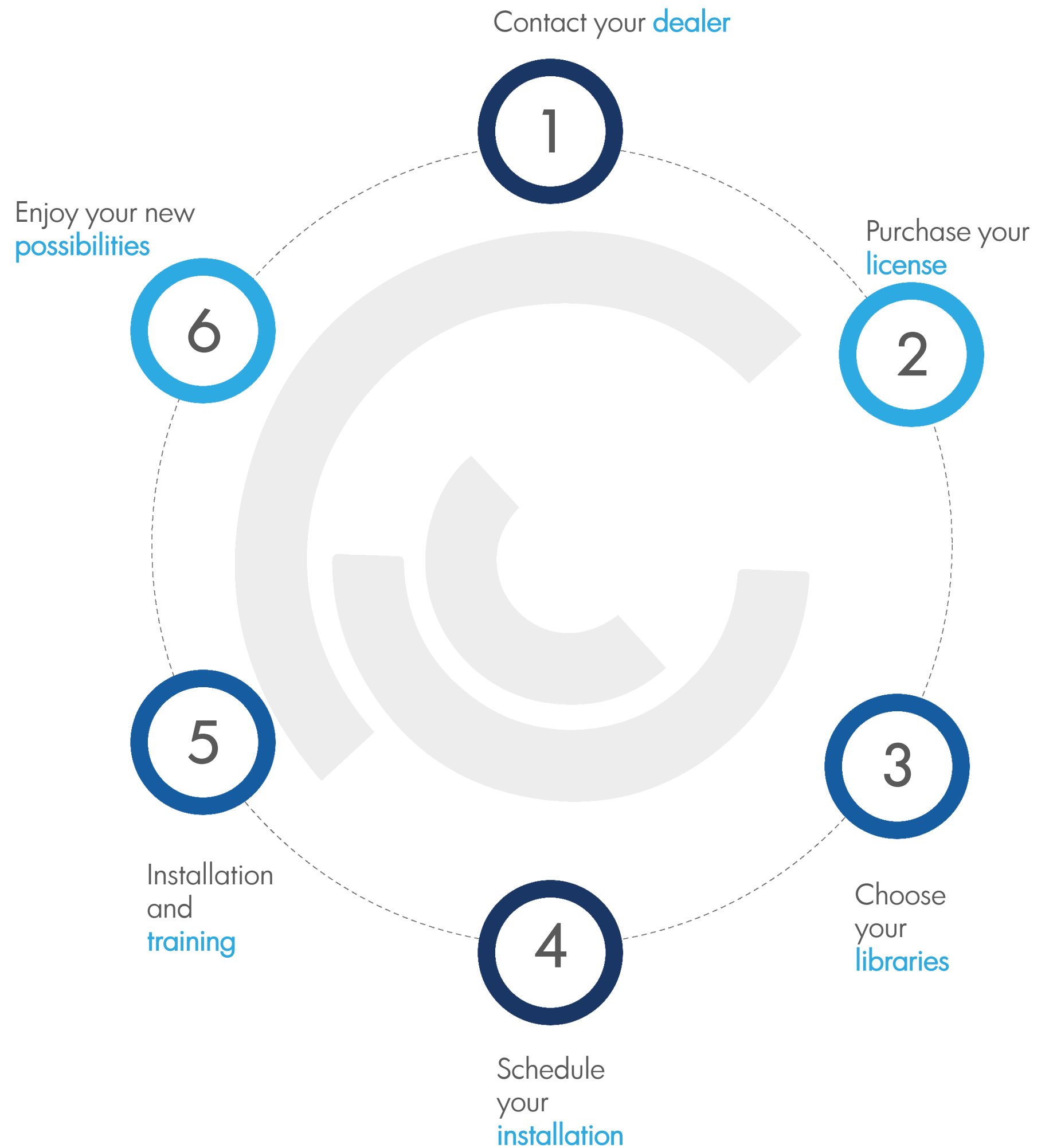
Average Ti-base cost	Cost element milled with connexion	Cost milled angulated element	InCadCam + SINTRON
€ 35,00 / € 40,00	€ 25,00	€ 40,00	€ 9,00

It is worth it!

 Incadcam



Purchase Flow Incadcam



FAQ

Incadcam

Q1

Which software and milling machine is the add-on compatible with?

- Only with Ceramill Match 2 and it's available for Amann Girrbach's Motion 1, Motion 2, Mikro and Matik.

Q2

Which position in the tool holder I must use the new flat milling rotos?

- It depends on the milling machine you use.

Motion 1, Motion 2 and Mikro 4X:

0,6mm ST on T4

1,2mm ST or 1,5mm T-Shape (for angulated channels) on T5

0,3mm HD on T6

Mikro 5X

0,3mm HD on T4

0,6mm ST on T5

1,2mm ST on T6

1,5mm T-Shape (for angulated channels) on T7

Q3

What is the meaning of Ti-Connect, Interface and Interface HD?

- When the add-on is installed you will see a drop box with Ti-Connect, Interface and Interface HD.

Ti-Connect is the standard strategy from the Match 2 software.

Interface activates the add-on and uses the flat milling rotos 0,6 and 1,2mm in the CAM calculation.

Interface HD activates the flat milling rotos and also the 0,3mm for a high definition milling (recommended for external hexagon).

Q4

Could I use the flat milling rotos to mill copings? Crowns?

- No. The flat milling rotos are used only for abutments.

It's recommended to remove the flat milling rotos from the tool holder when milling copings, crowns, inlays, veneers, etc.

Thank
you!

incadcam.com

f /incadcam @incadcamsoftware



Mrs. Cristiane Sieben

+55 41 98818-8962
cristiane.sieben@incadcam.com

