

costruzioni apparecchiature odontotecniche

fgline



EFFEGI BREGA®

CHIC

Steam generator



Item code: 200730

Voltage	230	V
Frequency	50	Hz
Power input	1550	W
Maximum operating temperature	135	°C
Tank capacity	1.0	dm ³
Boiler capacity	1.3	dm ³
Water consumption	0.1	l/min
Maximum operating pressure	0.4 (4)	MPa(bar)
Safety valve set pressure	0.55 (5.5)	MPa(bar)
Noise level [EN-3746-LpA]	78.9	dB(A)
IP protection	X3	IP
Height	335	mm
Width	155	mm
Depth	345	mm
Weight	7	kg
Weight inclusive of packaging	9	kg
Packaging size	400x300x410	mm

CHIC

Steam generator

This table steam generator, compact and practical, is ideal for sanitation. It respects the tradition of sturdiness, practicalness and long-lasting life of our products. Connection to the water mains is not required. Quick and easy to use: just pour decalcified water into the tank and plug the steam generator in; it will be ready in approximately 8 minutes, then all you will have to do is to top up the water tank whenever indicated by the pilot light and the cycle will continue without interruptions. Hands-free equipment, thanks to the foot control, for a practical and quick use.



- Green pilot light: live equipment.
- Blue pilot light: electropump operation.
- Red pilot light: heat resistance operation.
- Button for manual supplying of steam.
- Foot control for hands-free supplying of steam.
- Boiler: AISI 316 L stainless steel.
- Boiler insulation up to 250 °C.
- Satin stainless steel casing.
- Painted aluminium cover.
- Copper pipes.
- Brass pipe-fittings.
- Safety valve set at 5.5 bar.
- Ready for use in 8 minutes after turning on.
- Portable, thanks to the separate tank.
- Easy filling: hole Ø 65 mm.
- The tank can be filled up without stopping the equipment.

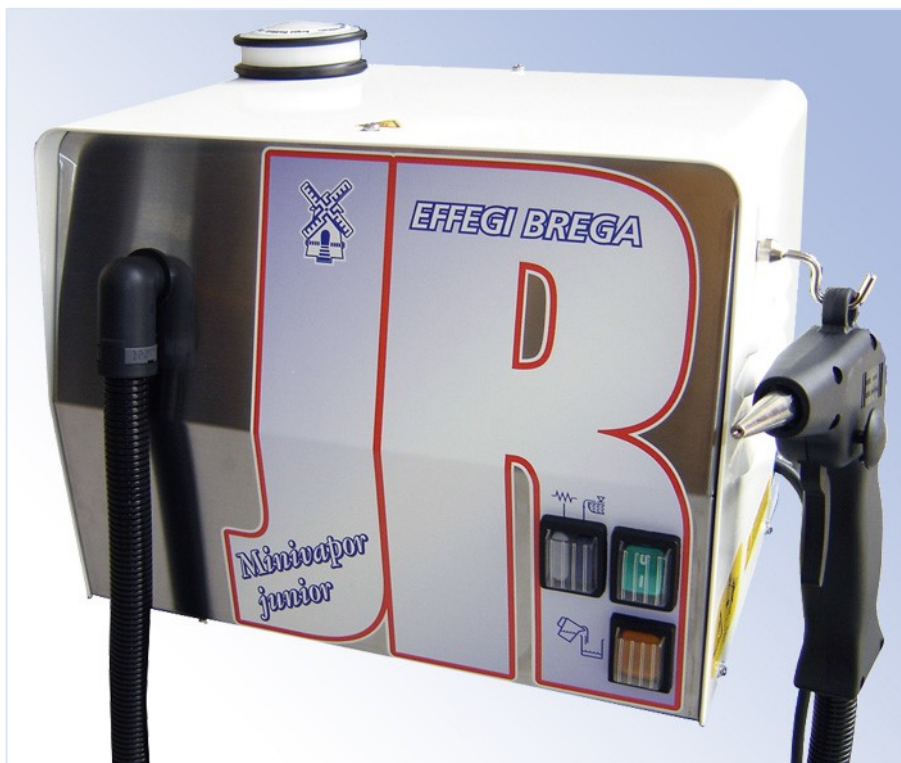
Standard colour: white. Other colours available on request.



MINIVAPOR JUNIOR

Steam generator

CE



Item code: 200050

Voltage	230	V
Frequency	50	Hz
Power rating	1250	W
Maximum operating temperature	135	°C
Tank capacity	1.0	dm ³
Boiler capacity	2.2	dm ³
Water consumption	0.2	l/min
Maximum working pressure	0.4 (4)	MPa (bar)
Safety valve set pressure	0.55 (5.5)	MPa (bar)
Sound pressure level [EN-3746-LpA]	81.9	dB(A)
IP protection	X3	IP
Height	410	mm
Length	340	mm
Depth	330	mm
Weight	12	kg
Weight inclusive of packaging	14.5	kg
Package size	470x400x380	mm

MINIVAPOR JUNIOR

Steam generator

The latest of EFFEGI BREGA® products. In line with the range, the appliance is strong, practical and long lasting. Connection to the water mains is not required. Quick and easy to install: simply pour distilled water in the tank and plug it in; the appliance will be ready in approximately 10 minutes, then all you will have to do is top up the water tank whenever the yellow pilot light goes on.

DISTILLED WATER TANK

- Manually-filled water tank, whereby the appliance can be moved around.
- Easy filling: 65mm Ø inlet hole.
- The tank can be topped up without having to switch off the appliance.

GUN

STEAM SUPPLY

- Practical and thermally insulated.
- Ergonomic, easy to use.
- "Sensor" control lever.
- Safety button.

COMPONENTS

- AISI 316 L stainless steel boiler.
- Boiler insulation resistant to 500 °C.
- Satin stainless steel casing.
- Varnished aluminium lid.
- Copper tubing.
- Brass fittings.
- Numbered safety valve set at 5.5 bar.

GUN HOSE

- Practical and strong.
- No remaining pressure. Extremely flexible.

PILOT LIGHTS

- The left pilot light indicates that the heating element is operating.
- The right pilot light indicates that the water level in the boiler is low and the motor pump is running and loading water.

WATER TOP-UP PILOT LIGHT

- The light goes on to warn that water in the tank is low. The appliance remains on and pressurized. Simply top up to continue with the work.



MINIVAPOR 200

Steam generator

CE



Item code: 200058

Voltage	230	V
Frequency	50	Hz
Power rating	1950	W
Maximum operating temperature	135	°C
Boiler capacity	3.6	dm ³
Water consumption	0.5	l/min
Maximum working pressure	0.4 (4)	MPa (bar)
Safety valve set pressure	0.55 (5.5)	MPa (bar)
Sound pressure level [EN-3746-LpA]	81.2	dB(A)
IP protection	X3	IP
Height	270	mm
Length	345	mm
Depth	280	mm
Weight	14.5	kg
Weight inclusive of packaging	17	kg
Package size	470x400x380	mm

MINIVAPOR 200

Steam generator



Minivapor 200 steam generator is a new multifunctional unit combining innovation and experience. Compact dimensions, reduced consumptions and limited costs are associated with high technology and an excellent safety level.



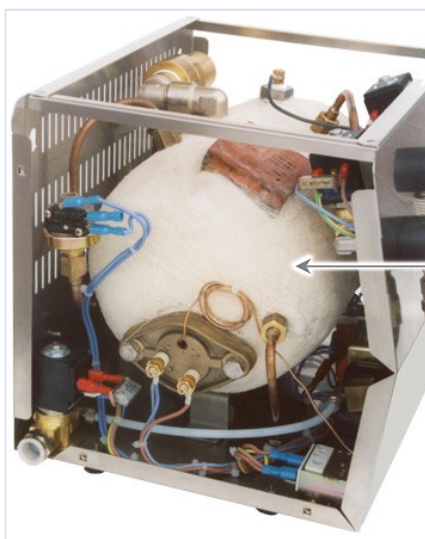
ELECTRONIC CONTROL OF WATER LEVEL

AUTOMATIC WATER CHARGE

Possibility to connect the unit to the water mains.

SPRAY GUN WITH ADJUSTABLE JET

The jet of the spray gun can be adjusted by modifying the pressure on the gun lever.



COPPER BOILER WITH COVER

The inner boiler, made of copper, has a special anti-explosion cover.

Despite its compact size, making it the most compact product in EFFEGI range of steam generators, MINIVAPOR 200 ensures high quality and significant advantages, which place it among high level equipment for intensive use.

MINIVAPOR 93

Steam generator

CE



Item code: 200061

Voltage	230	V
Frequency	50	Hz
Power rating	1950	W
Maximum operating temperature	135	°C
Boiler capacity	4.7	dm ³
Water consumption	0.6	l/min
Maximum working pressure	0.4 (4)	MPa (bar)
Safety valve set pressure	0.55 (5.5)	MPa (bar)
Sound pressure level [EN-3746-LpA]	81.2	dB(A)
IP protection	X3	IP
Height	300	mm
Length	410	mm
Depth	270	mm
Weight	16.5	kg
Weight inclusive of packaging	18.5	kg
Package size	510x390x420	mm

MINIVAPOR 93

Steam generator



A steam generator with a maximum pressure of 4 bar. The electromechanical controls reflect the tradition of our “fg” line. This compact appliance requires connection to the water mains. The casing is in varnished stainless steel and the lid in varnished aluminium. For its simplicity, solidity and power, it is a must in every dental laboratory. The appliance bears the “CE” and “TÜV-GS” Marks.

PRESSURE GAUGE

- The gauge indicates the internal pressure.

GUN

- Fitted with safety catch.
- Can be positioned on either side, L/R.
- Ergonomic.
- Special heat-resistant material

PILOT LIGHTS

- When lit, the blue light indicates that water in the tank is low and the pump is running.
- When lit, the white light indicates that the heating element is operating.

PUSH-BUTTON

- Used in place of the pedal to control dry steam.

FIXED NOZZLE

- Nozzle for dry steam.

COMPONENTS

- 3.6 l copper boiler
- Boiler insulated with a fiber resistant to 500 °C
- Varnished stainless steel casing
- Varnished aluminium lid
- Copper tubing
- Brass fittings
- Numbered safety valve set at 5.5 bar

RESET PUSH-BUTTON

- Cycle reset button, to be used when the pump safety device is triggered.

ON-OFF LIGHT SWITCH

To turn the appliance on and off.
The green light indicates that the appliance is operating.

GUN CONTROL PUSH-BUTTONS

- The left button activates the output of “dry steam”.
- The right button activates the output of “hot water”.
- Both buttons at a time activate the output of a “mixture of water and steam”.
- The left button indicates also any thermostat lockout.



MULTIVAP

Steam generator

CE



Item code: 200062

Voltage	230	V
Frequency	50	Hz
Power rating	1950	W
Maximum operating temperature	170	°C
Boiler capacity	4.8	dm ³
Water consumption	0.85	l/min
Maximum working pressure	0.8 (8)	MPa (bar)
Safety valve set pressure	1.05 (10.5)	MPa (bar)
Sound pressure level [EN-3746-LpA]	84.4	dB(A)
IP protection	X3	IP
Height	330	mm
Length	300	mm
Depth	320	mm
Weight	19	kg
Weight inclusive of packaging	21.4	kg
Package size	510x390x420	mm

MULTIVAP

Steam generator



A steam generator with a maximum pressure of 8 bar. The electromechanical controls reflect the tradition of our “fg” line. This compact appliance requires connection to the water mains. The casing is in varnished stainless steel and the lid in varnished aluminium. For its simplicity, solidity and power, it is a must in every dental laboratory. The appliance bears the “CE” and “TÜV-GS” Marks.

PILOT LIGHTS

- When lit, the red light indicates the intervention of the thermostat, whilst the yellow light the intervention of the pump safety device.

BLUE AND WHITE PILOT LIGHTS

- When lit, the blue light indicates that water in the tank is low and the pump is running, whilst the white light that the heating element is operating.

PRESSURE GAUGE

- The gauge indicates internal pressure.

PUSHBUTTON

- Used in place of the pedal to control dry steam

FIXED NOZZLE

- Nozzle for dry steam

RESET PUSH-BUTTON

- Cycle reset button, to be used when the pump safety device has triggered.

COMPONENTS

- 4.8 l copper boiler
- Boiler insulated with a fiber resistant to 500 °C
- Varnished stainless steel casing
- Varnished aluminium lid
- Copper tubing
- Brass fittings
- Safety valve 10 bar

GUN

- Fitted with safety catch
- Can be positioned on either side, L/R
- Ergonomic
- Special heat-resistant material.

GUN CONTROL PUSH-BUTTON

- The left button activates the output of “dry steam”.
- The right button activates the output of hot water.
- Both buttons at a time activate the output of a “mixture of water and steam”.



MINIVAPOR MS 2005

Steam generator

CE



Item code: 200066

Voltage	230	V
Frequency	50	Hz
Power rating	1950	W
Maximum operating temperature	170	°C
Boiler capacity	4.8	dm ³
Water consumption	0.85	l/min
Maximum working pressure	0.8 (8)	MPa (bar)
Safety valve set pressure	1.0 (10)	MPa (bar)
Sound pressure level [EN-3746-LpA]	84.4	dB(A)
IP protection	X3	IP
Height	400	mm
Length	390	mm
Depth	320	mm
Weight	23	kg
Weight inclusive of packaging	25.5	kg
Package size	500x420x520	mm

MINIVAPOR MS 2005

Steam generator



A deep understanding of dental lab problems and more than 20 years of experience in manufacturing steam generators, allow us to offer the most technologically advanced models able to meet the needs of dental labs of our days.

SATURATED STEAM

- Bridges decontamination.
- Ceramic cleansing.
- Foot control in compliance with safety regulations.

SPRAY GUN

WATER – STEAM – SPRAY

- Practical with high temperature insulation
- Ergonomic and user friendly.
- Control lever with variable intensity.

DIGITAL THERMOREGULATOR

Adjustable working pressure from 0.02 to 0.8 MPa, according to need.

PURIFIED WATER

- Water dispenser for:
 - coating mix;
 - plaster mix;
 - ceramic tools cleansing.
- Foot control in compliance with safety regulations.

ELECTRIC LITRE COUNTER

- The display shows the exact amount of water, in litres, used for the regeneration cycle, so that the appliance can be topped up with distilled water in due time to prevent scale deposits.



DVA/8 - EASY

Water softener



Item code: 200071



Item code: 200072

Capacity	8	l
Connection to water mains	3/8" - 1/2"	gas
Connection to appliance	3/8"	gas
Connection pipe length	3000	mm
Weight	8	kg
Weight inclusive of packaging	8.5	kg
Package size	250x200x430	mm

WATER SOFTENER FOR DENTAL LABORATORIES

The most suitable appliance to ensure long service life to your equipment.

Regular use will greatly reduce maintenance interventions.

The 200072 model is equipped with a litre counter to warn when regeneration is needed.

The appliance has to be connected to the domestic water mains.

B - BB93 - TWIN PULSAR

Vibrator



Vibrator “B”
Item code: 200002



Vibrator “BB93”
Item code: 200004



Vibrator “TWIN PULSAR”
Item code: 200007

Voltage	230			V
Frequency	50			Hz
Power input	70 - 100			W
Electrical plug	10÷16			A
Vibrations [ISO 8041 - aw]	0,08			m/s ²
Height (B - BB93 - PULSAR)	125	90	140	mm
Length (B - BB93 - PULSAR)	130	240	265	mm
Length (B - BB93 - PULSAR)	145	170	170	mm
Weight (B - BB93 - PULSAR)	1,8	5,0	5,5	kg
Weight inclusive of packaging (B - BB93 - PULSAR)	2,2	5,7	6,0	kg
Package size “B”	190x190x180			mm
Package size “BB93”	330x240x250			mm
Package size “PULSAR”	330x240x250			mm

CHAUFFE

Heaters

CE



Item code: 200690

Maximum temperature	40	°C
Maximum temperature	65	°C
Height	120	mm
Length	110	mm
Depth	160	mm
Weight	1	kg
Weight inclusive of packaging	3	kg
Package size	220x240x250	mm

CHAUFFE

Heaters

Composites warming (both paste and flow-composites) improves the easy application of the product and facilitates its use.

The temperature can be set according to need in order to:

- control the plasticity of paste composites, thus facilitating their use in all build-up steps;
- increase the fluidity and flowability of flow-composites during injection and moulding steps, thus improving their final performances.

A thermometer with gauge and 3-mm probe enables accurate monitoring of the temperature.

Holders for syringes, composites, tips, vials and thermometer are available.

LAGGING

Thermal-insulated framework.

TIPS CHAMBERS

4 chambers available
(diameter: 8 mm).

SYRINGES CHAMBERS

6 chambers available
(diameter: 15 mm).

VIALS CHAMBERS

2 chambers available
(diameter: 10 mm).

THERMOMETER

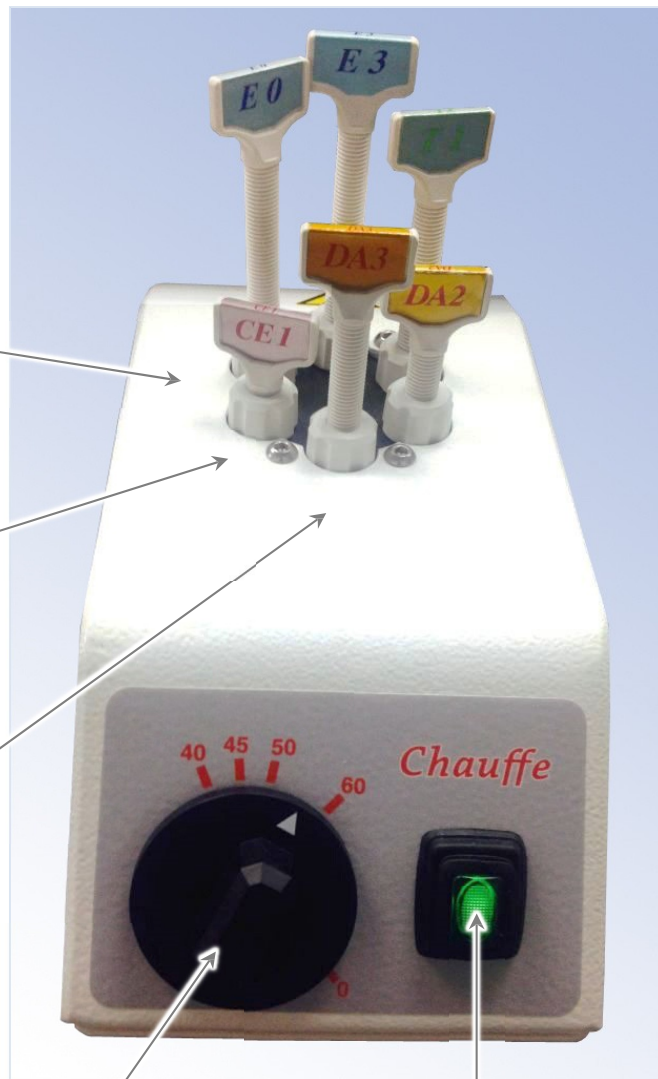
1 chamber (diameter 4 mm)
for thermometer probe.

THERMOSTAT

- To set the temperature of the warming body from +40 to +60 °C.

ON-OFF BUTTON

- Unit switching on and off.
- Green light lit: unit ON.



PENTOLA TERMOSTATICA

Water kettle

CE



— cordless —

Item code: 200011

Voltage	230	V
Frequency	50	Hz
Absorbed power	1800	W
Electric plug	10÷16	A
Inside diameter	138	mm
Weight	1	kg
Weight inclusive of packaging	1.7	kg
Package size	330x240x250	mm

PENTOLA TERMOSTATICA

Water kettle

Compact, practical and easy to use. The base cord can be plugged in a standard power socket and the kettle can be picked up and moved around the lab.

This appliance is ideal for melting waxes and Kerr extruders or for bringing jobs made of resin to the required temperature, placing them on the grid plate. In line with the range, the appliance meets the distinctive characteristics in terms of usefulness, simplicity and long life span.



SOLEIL

Light curing unit



Item code: 200700

Wavelength available	380÷540	nm
Chamber diameter	143	mm
Max. chamber depth	75	mm
Turntable diameter	140	mm
Turntable speed	5	rpm
Max. chamber heating temp.	55	°C
Max. vacuum	72	mmHg
Air consumption for vacuum	24	l/min
Required pneumatic pressure of network	0.6 (6)	MPa (bar)
Max. operating pressure	0.2 (2)	MPa (bar)
Relief valve calibration	0.25 (2.5)	MPa (bar)
Power consumption	450	W
Voltage	230	V
Frequency	50	Hz
Sound level (SPL)	78	dB(A)
Plug for power supply	10÷16	A
Depth	470	mm
Width	250	mm
Height	250	mm
Weight	20	kg
Weight inclusive of packaging	23	kg
Packing size	600x300x450	mm

SOLEIL

Light curing unit

Multipurpose curing unit for photocuring resins and composites:

- ✓ **LED curing with no heating.**
- ✓ **Emission range from 380 to 540 nm.**
- ✓ **Preheatable chamber.**
- ✓ **Can work at ambient pressure.**
- ✓ **Pressure can be applied during curing cycle.**
- ✓ **Vacuum can be applied during curing cycle.**
- ✓ **Pressure/vacuum can be alternated during curing cycle.**
- ✓ **Chamber can be used to apply vacuum or pressure only.**

Optimizing the light-curing process: the many different kinds of composites and resins available make it necessary to diversify the light-curing process. Adjusting the power of the LEDs can protect the integrity of the materials used, regardless of their thickness.

The possibility to adjust pressure and vacuum settings can improve the appliance's compactness, making it stronger, easier to polish and less subject to dental plaque. Appearance and colours are greatly improved, and the surface scattering layer is thinner (Effegi Brega patent).

Thanks to the reflective chamber and turntable, the light is evenly diffused with no dark spots, ensuring the complete and safe photocuring of the whole appliance.

SOLEIL can process: inlays, onlays, cosmetic crowns, cosmetic coverings on metal, custom trays, bite guards, spacings for abutments with varnish, or any item or device requiring photosensitive materials.



POLYA

Polymerization unit

CE



Item code: 200013

Voltage	230	V
Frequency	50	Hz
Power input	1000	W
Electric plug	10÷16	A
Chamber capacity	2.0	dm ³
Internal chamber diameter	120	mm
Internal chamber height	177	mm
Maximum water level	160	mm
Temperature range	0÷120	°C
Maximum operating pressure	0.5 (5)	MPa (bar)
Safety valve set pressure	1.1 (11)	MPa (bar)
Sound pressure level [EN-3746-LpA]	66.8	dB(A)
Height	280	mm
Length	210	mm
Depth	280	mm
Weight	11	kg
Weight inclusive of packaging	13.5	kg
Package size	500x290x440	mm

POLYA

Polymerization unit

Polymerization unit with compact dimensions. Easy and functional: put the job in the chamber, fill with water, set the maximum temperature, programme the polymerization time and enter the required air pressure. The cycle starts with the selection of the required time: the appliance starts to heat the water and once the polymerization temperature is reached the timer starts to decrease. Temperature is kept constant till the timer decreases to zero. Water and the air are automatically discharged at the end of the cycle.

LID

Provided with mechanical safety valve to prevent the lid from opening when still pressurized.

POLYMERIZATION CHAMBER

- Chamber capacity 2 dm³.
- Diam. 120 mm - Depth 177 mm.
- Max water level 160 mm

PRESSURE GAUGE

The gauge indicates the polymerization pressure.

AIR INTAKE BUTTON

It allows gradual air intake till the required pressure is reached.

TEMPERATURE SELECTOR

To select the required operating temperature.

TIMER

To select the time for the required cycle.

ON-OFF SWITCH

To turn the appliance on and off.
When lit, the pilot light warns that the appliance is live.

MAIN CHARACTERISTICS

- Manual water input.
- Manual air intake via button control: maximum 4 bar (cold).
- Maximum temperature: 120°
- Maximum pressure: 6 bar (at working temperature).
- Automatic air and water discharge at end of cycle.
- The cycle starts by selecting the required time.
- The timer starts decreasing once the pre-set temperature is reached.

OPTIONAL ACCESSORIES



183608

090571

183604

POLYVALENT

Polymerizer



Item code: 200016

Voltage	230	V
Frequency	50	Hz
Power rating	1200	W
Electric plug	10÷16	A
Chamber capacity	2.4	dm ³
Internal chamber diameter	150	mm
Internal chamber height	115	mm
Temperature range	0÷130	°C
Maximum working pressure	1.0 (10)	MPa (bar)
Safety valve set pressure	1.1 (11)	MPa (bar)
Sound pressure level [EN-3746-LpA]	66.8	dB(A)
Height	300	mm
Length	280	mm
Depth	380	mm
Weight	13	kg
Weight inclusive of packaging	15.4	kg
Package size	470x400x380	mm

POLYVALENT

Polymerizer

The appliance can be used as a polymerization unit, as a press for plaster and investment material, as a pressure curing chamber and for water baths. Over the last 30 years, this product has confirmed its qualities in terms of solidity and functional performance. Simply fill up with water, put the finished job in the chamber, set the program and start the cycle. At the end of all the process phases, air only can be discharged in order to re-use warm water for another cycle, or both air and water can be completely discharged. Connections are required to water mains, compressed air supply and discharge system. A water collection tank can be supplied as optional accessory.

LID

- Hinged opening for easy access to the chamber.
- Safety valve to prevent the lid from opening when pressurized.

TIMER

To select the time for the required cycle.

POLYMERIZATION CHAMBER

- Chamber capacity 2.4 dm³.
 - Dia. 150 mm - depth 115 mm.
- Complete with:
- Basket with handle.
 - Tweezers holder.
 - Base grid.

THERMOREGULATOR

The display indicates:

- Selected temperature.
- Actual temperature.

PRESSURE GAUGE

The gauge indicates the air intake pressure.

CONTROL PUSH-BUTTONS

- Yellow pilot light: cycle started.
- White button: to start the series of automatic operations.
- Yellow switch: to select the type of discharge: air only or both air and water.
- Red button: for compressed air intake.
- Red pilot light: thermostat triggered due to improper use.
- Right yellow pilot light: chamber lid open.
- Left yellow pilot light: heating phase on.

COMPONENTS

- Chamber and lid in anodized aluminium.
- Body in stainless steel.
- Lid in varnished aluminium.
- Copper piping.
- Brass fittings.
- Safety valve set to 11 bar.
- Heating element in incoloy.
- Optional collection tank for waste water.
- Filter on the air and water discharge line.



PENTATHLON 205

Polymerizer



Item code: 200021

Voltage	230	V
Frequency	50	Hz
Power rating	1800	W
Electric plug	10÷16	A
Maximum operating temperature	130	°C
Chamber capacity	4.9	dm ³
Internal chamber diameter	205	mm
Internal chamber height	130	mm
Temperature range	0÷130	°C
Maximum working pressure	1.0 (10)	MPa (bar)
Safety valve set pressure	1.1 (11)	MPa (bar)
Sound pressure level [EN-3746-LpA]	65.5	dB(A)
Height	310	mm
Length	380.8	mm
Depth	485	mm
Weight	20	kg
Weight inclusive of packaging	24	kg
Package size	660x450x400	mm

PENTATHLON 205

Polymerizer

The appliance can be used as a polymerization unit, as a press for plaster and investment material, as a pressure curing chamber and for water baths. Over the last 30 years, this product has confirmed its qualities in terms of solidity and functional performance. Simply fill up with water, put the finished job in the chamber, set the program and start the cycle. At the end of all the process phases, air only can be discharged in order to re-use the warm water for another cycle, or both air and water can be completely discharged. Connections are required to water mains, compressed air supply and discharge system. A water collection tank can be supplied as optional accessory.



PENTATHLON DIGITAL

Polymerizer



Item code: 200022

Voltage	230	V
Frequency	50	Hz
Power rating	1800	W
Electric plug	10÷16	A
Maximum operating temperature	130	°C
Chamber capacity	4.9	dm ³
Internal chamber diameter	205	mm
Internal chamber height	130	mm
Temperature range	0÷130	°C
Maximum working pressure	1.0 (10)	MPa (bar)
Safety valve set pressure	1.1 (11)	MPa (bar)
Sound pressure level [EN-3746-LpA]	65.5	dB(A)
Height	310	mm
Length	380.8	mm
Depth	485	mm
Weight	19.5	kg
Weight inclusive of packaging	23.5	kg
Package size	660x450x400	mm

PENTATHLON DIGITAL

Polymerizer

Electronic large capacity polymerization unit. An appliance that meets our standards in terms of solidity, functional performance and service life.

CHAMBER

- Large capacity: a standard articulator can fit inside.
- Provided with basket, container and tweezers holder.
- Fitted with safety valve to prevent the lid from opening when still pressurized.

COOLING FAN KIT

Optional cooling system:

- Typical natural ventilation.
- Forced optional ventilation.
- Easy to install.
- Allows rapid cooling in about 20 minutes.

CONTROL DISPLAY

- Clearly legible.
- Simple.
- Data display:
Cycle start time, pressure, temperature, maintenance, cooling, air/water discharge, data printing.

KEY FEATURES

- Curing treatment for any type of resin.
- Water bath.
- Pressure water bath.
- Wax removal from cylinders
- Pressure curing chamber.
- Press for plaster and investment material.
- Resin curing in muffle by slow polymerization.
- 10 programmable cycles.
- Timed power on.
- Programmable timer.
- In case of short power cuts, the appliance will resume the cycle from where it was interrupted.

CONTROL BUTTONS

Functions:

- To program the various cycles.
- To display the set data.
- To print out the cycle reports.
- To control the appliance.

RS232 PORT

Function:

To connect the optional POLYPRINTER, whereby reports can be printed out for future reference or to certify the work done.



POLYPRINTER

Optional accessory



Compact, lightweight, thermal printer. Easy to install and to use. To provide proof of the work done and of the quality of performance.



CABLE RS232

To connect the printer to the motherboard.

Item code: 200027

PRINTER CABLE

To connect the printer to the power mains.

APPLICATIONS

- To print out cycle reports.
- To verify set data.
- To provide the customer with proof of the work done.

LED

Pilot lights:

- On - Off
- No paper.

15 LITRE TANK

Optional accessory

CE

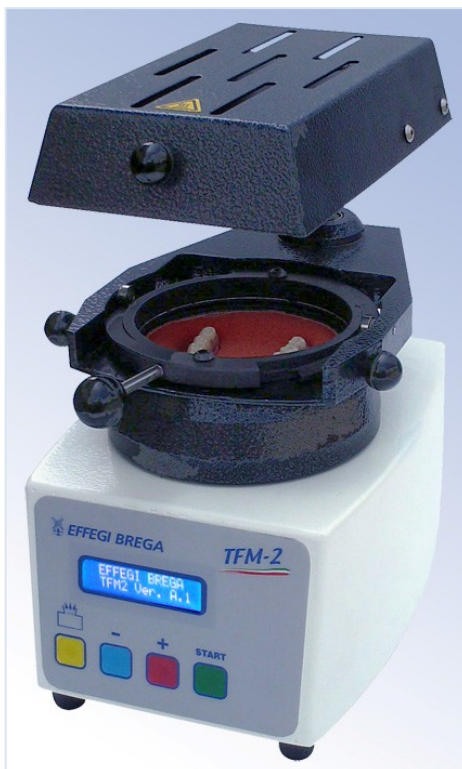


Item code: 200200

Capacity	15	l
Hose length	2000	mm
Height	330	mm
Length	300	mm
Depth	320	mm
Weight	00.7	kg
Weight inclusive of packaging	1.4	kg
Package size	420x310x200	mm

TFM 2

Thermoforming unit



Item code: 200035

Voltage	230	V
Frequency	50	Hz
Power input	420	W
Electric plug	10÷16	A
Preheating time	4	min
Round shape dimensions	Ø 135	mm
Square shape dimensions	125x125	mm
Sound pressure level [EN-3746-LpA]	70	dB(A)
Height	320	mm
Length	160	mm
Depth	270	mm
Weight	10	kg
Weight inclusive of packaging	14	kg
Package size	500x290x440	mm

TFM 2

Thermoforming unit

Thermoforming unit "TFM2" is a compact, robust and easy-to-use appliance.

Thermoplastic discs are processed in the vacuum created by the internal piston pump.

Many different jobs can be used for thermoforming purposes, thanks to the flat bottom plate and to the chamber provided with specific metal balls.

Brega original round or square discs can be used in these sizes: Ø 135 mm; Ø 125 mm; 125 x 125 mm.

Heating time is controlled by an electronic card and an acoustic signal is emitted when the disc is ready to be thermoformed. The solid steel base supports the heating element and the disc rest plate, which slides on ball bushings.



TFM 3

Thermoforming unit



Item code: 200033

Voltage	230	V
Frequency	50	Hz
Power input	600	W
Electric plug	10÷16	A
Temperature range	0÷450	°C
Preheating time	8	min
Round shape dimensions	Ø 135	mm
Square shape dimensions	125x125	mm
Sound pressure level [EN-3746-LpA]	75	dB(A)
Height	335	mm
Length	375	mm
Depth	280	mm
Weight	14.5	kg
Weight inclusive of packaging	16.8	kg
Package size	510x390x420	mm

TFM 3

Thermoforming unit

Thermoforming unit "TFM3" is a compact, robust and easy-to-use appliance.

Thermoplastic discs are processed in the vacuum created by the internal piston pump.

Many different jobs can be used for thermoforming purposes, thanks to the flat bottom plate and to the chamber provided with specific metal balls.

Brega original round or square discs can be used in these sizes: Ø 135 mm; Ø 125 mm; 125 x 125 mm.

Heating time is controlled by an electronic card and an acoustic signal is emitted when the disc is ready to be thermoformed. The solid steel base supports the heating element and the disc rest plate, which slides on ball bushings.

HEATING ELEMENT

Ceramic heating element with thermocouple.

RING NUT

It allows locking the disc.

DISC

Round 135 mm
Square 125x125 mm
Round 125 mm

BASE

In varnished steel, it offers excellent stability and is easy to use.

CONTROL BUTTONS

The start and stop buttons are associated with the pump. Thermoforming times can be modified and entered via + and - buttons.

PROCESS CHAMBER

Provided with:

- Quick use plate
- Metal adjusting balls with magnetic retaining band
- Silicone ring
- Set of 7 sponges for different applications

CONTROL DISPLAY

Displayed data:

- Thermoforming times.
- Actual vacuum rate.
- Any fault condition.



Thermoforming discs - round type

Ø 134 mm

Description	Thickness	Type	Code	Pieces per box	Colour
Moulded cap	0.5	Calcinable	190002	90	White
Base plate	1.5	Base plate	190305	30	Transparent
	2		190306	25	
Impression trays	3	Impression trays	190013	45	White
	4		190014	35	
	5		190015	28	
Provisional dental prosthesis	0.5	A/A Provisionals	190340	50	Transparent
	1		190342	30	
Provisionals (negative)	1.5	Provisionals (negative)	190025	30	Transparent
	2		190026	22	
Bite plate M	1	Soft	190329	40	Transparent
	2		190330	22	
	3		190331	15	
	4		190332	12	
	0.5		190347	50	
Bite plate R	0.75	Hard	190346	40	Transparent
	1		190341	30	
	2		190335	22	
	3		190336	15	
	4		190337	12	
Whitening	0.75	Hard	190364	40	Transparent
	1		190365	30	
	1		190368	30	
	0.75	Soft-Hard-Soft	190051	40	
Bite Plane R-M	2	Bite RM (R15 + M5)	190052	15	Clear opal
	3	Bite RM (R20 + M10)	190053	10	
	4	Bite RM (R20 + M20)	190054	8	
Mouthguard	1.5	Mouthguard	190071	5	Clear opal
	2		190072	5	
	3		190074	5	
	4		190075	5	

Thermoforming discs - square type

125 x 125 mm

Description	Thickness	Type	Code	Pieces per box	Colour
Moulded cap	0.5	Calcinable	190202	20	White
	1		190229	20	
Bite plate M	2	Soft	190230	10	Transparent
	3		190231	10	
	4		190232	8	
Bite plate R	0.5	Hard	190247	20	Transparent
	0.75		190246	20	
	1		190241	20	
	2		190235	10	
	3		190236	10	
	4		190237	8	
Whitening	0.75	Hard	190264	20	Transparent
	1		190265	20	
	1	Soft	190268	20	
	0.75	Soft-Hard-Soft	190251	20	
Bite Plane R-M	2	Hard-Soft	190252	10	Transparent
	3		190253	10	
	4		190254	8	
Mouthguard	2	Extra Soft	190272	5	Transparent
	3		190274		
	4		190275		
	2		190272-8	3	Blue
	3		190274-8		
	4		190275-8		
	2		190272-5	3	Gold
	3		190274-5		
	4		190275-5		
	2		190272-10	3	Pink
	3		190274-10		
	4		190275-10		
Mouthguard	2	Extra Soft	190272-15	3	Orange
	3		190274-15		
	4		190275-15		
	2		190272-16	3	Yellow
	3		190274-16		
	4		190275-16		

PLASTIC DISCS

Thermoforming material



Item code: 190xxx

Boxes from 8 to 90 pieces.

Check plastic specifications on the list of available plastics.

Each box contains only one kind of plastic.

Store in a cool and dry place, away from the sun and heat sources.

Standard dimensions: Ø 134 (code 1903xx) - Square 125x125 (code 1902xx)

Dimensions upon request: Ø 120 (code 1907xx)

To be used with the following thermoforming units:

Mini stampatrice BREGA – SP – BB93 – DIGITAL P – TFM 1 – TFM 2 – TFM 3

AS 800 SILENT

Dust extractor

CE



Item code: 200091

Voltage	230	V
Frequency	50	Hz
Power input	800	W
Sound pressure level [EN-3746-LpA]	75.7	dB(A)
Vibrations [ISO 8041 - a _w]	0.07	m/s ²
Height	425	mm
Length	80	mm
Depth	185	mm
Weight	11	kg
Weight inclusive of packaging	13.5	kg
Package size	490x260x520	mm

SANDY

Sandblaster

CE



Item code: 200082

Voltage	230	V
Frequency	50	Hz
Power input	6	W
Maximum air pressure	1.0 (10)	MPa (bar)
Working pressure	0.01÷0.6 (0.1÷6)	MPa (bar)
Sound pressure level [EN-3746-LpA]	75.3	dB(A)
Vibrations	0.07	m/s ²
Height	350	mm
Length	360	mm
Depth	420	mm
Weight	12	kg
Weight inclusive of packaging	15	kg
Package size	500x420x520	mm

SANDY

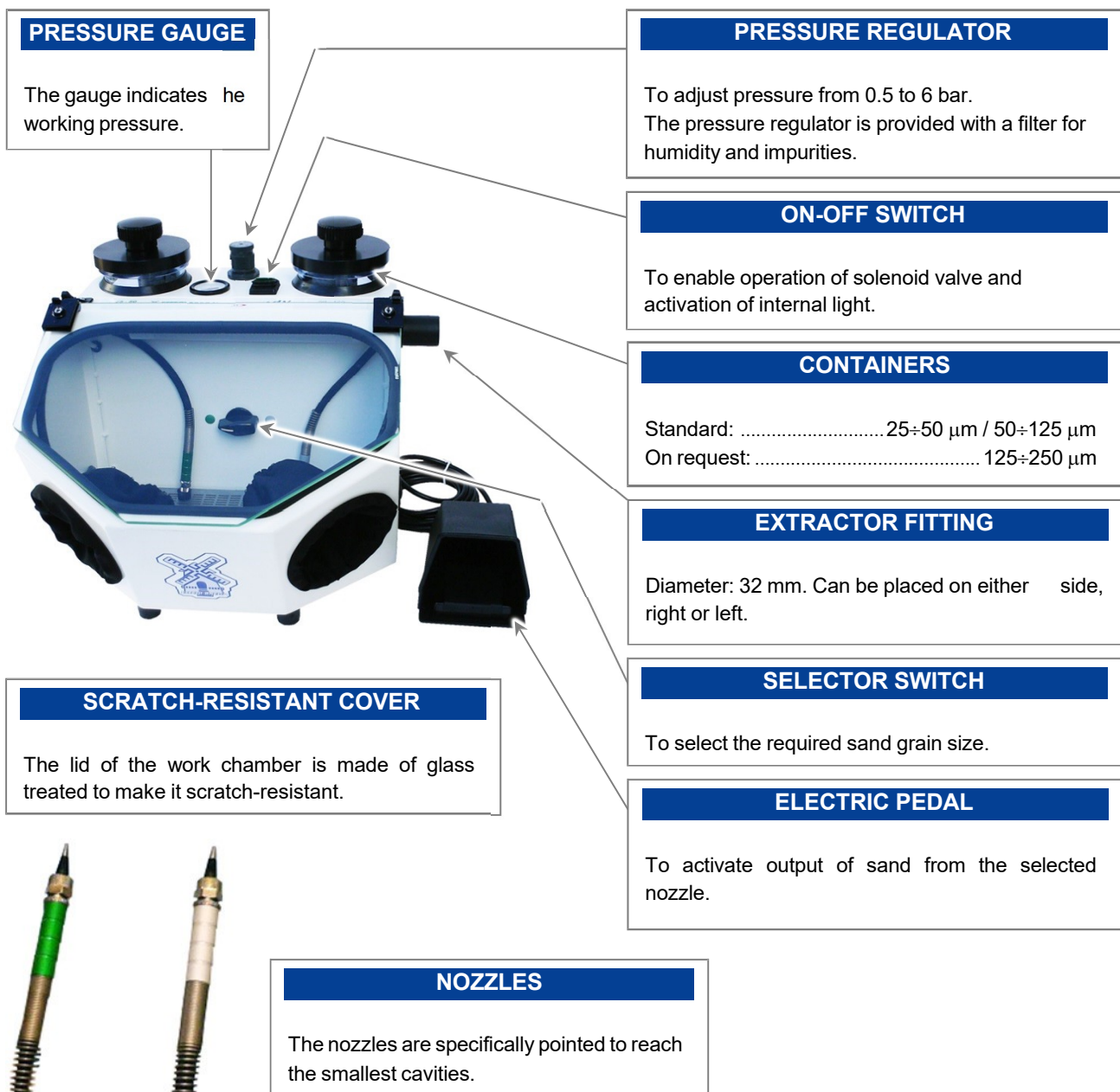
Sandblaster

SANDY is a sandblaster specifically designed and created to meet the needs of the laboratory attached to the dental clinic.

• **ERGONOMIC** • **FUNCTIONAL** • **COMPACT**

SANDY features a series of innovative solutions implemented with the aim to optimize usage and rectify any routine inconvenience.

The ergonomic design fits a standard work position. All the controls can be easily reached and operated. The appliance is compact, but with ample internal work space. Connection to extractor AS 800 is required, in order to remove dusts generated during processing. The extractor fitting can be placed on either side, right or left, so that the appliance can go in small spaces.



ARES AUTOMATIQUE

Sandblaster



Item code: 200083

Voltage	230	V
Frequency	50	Hz
Power input	12	W
Maximum air pressure	1.0 (10)	MPa (bar)
Working pressure	0.01÷0.8 (0.1÷8)	MPa (bar)
Sound pressure level [EN-3746-LpA]	75.3	dB(A)
Vibrations	0.07	m/s ²
Height	300	mm
Length	380	mm
Depth	440	mm
Weight	14	kg
Weight inclusive of packaging	19	kg
Package size	580x450x600	mm

ARES AUTOMATIQUE

Sandblaster

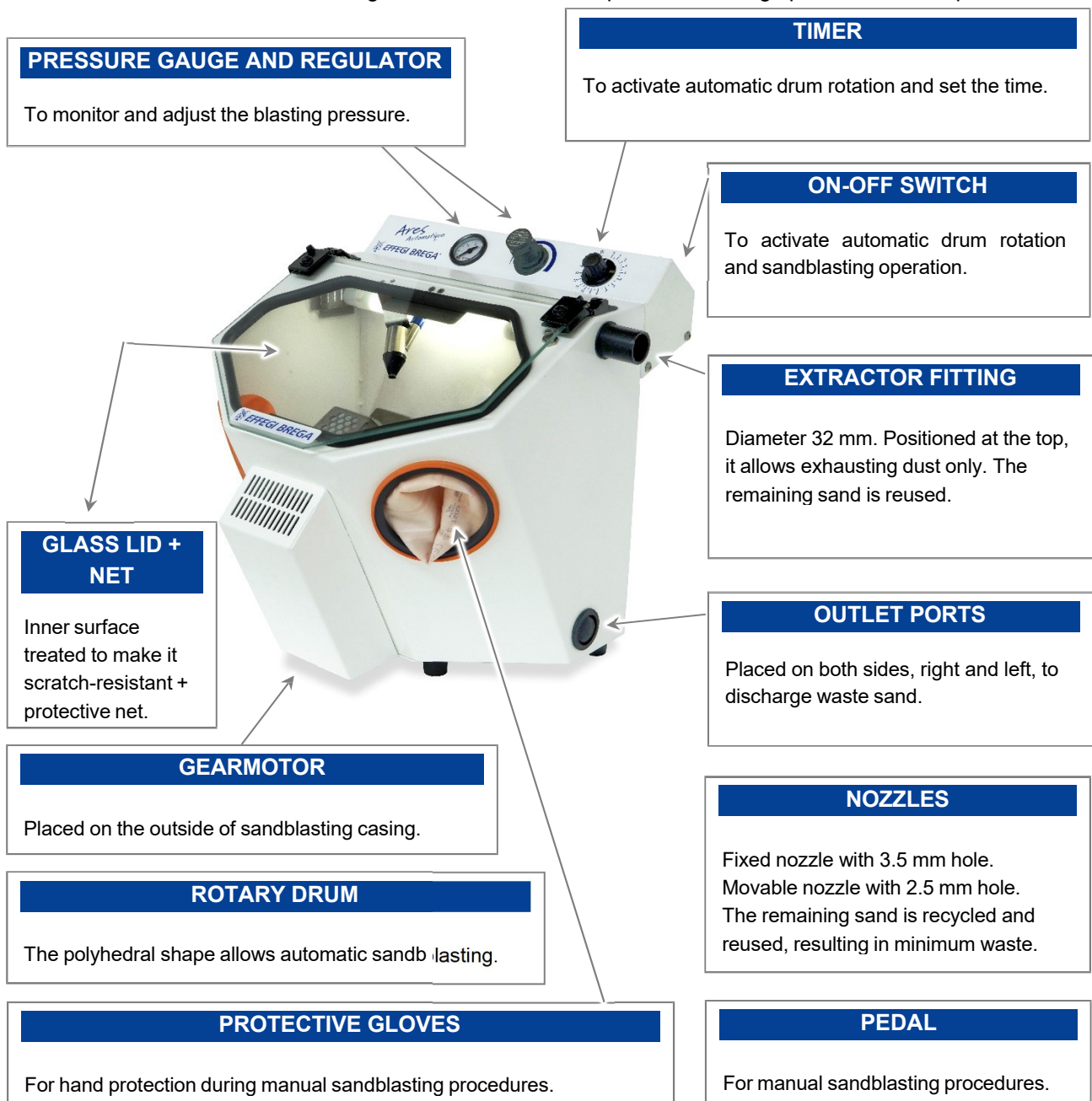
ARES AUTOMATIQUE is a sandblaster created to meet needs of dental laboratories that require an appliance for automatic sandblasting procedures.

• AUTOMATIC • ERGONOMIC • COMPACT

ARES AUTOMATIQUE is specifically designed for automatic roughening by sand recirculation. Simply put the job in the rotary drum and start the cycle: the surface will be automatically and perfectly polished.

The drum can be removed easily and the appliance can be used as a manual sandblaster.

Removing the drum will leave ample maneuvering space for manual procedures.



ALOX 2001

Sandblaster



Voltage	230	V
Frequency	50	Hz
Power input	11	W
Maximum air pressure	1.0 (10)	MPa (bar)
Working pressure	0.01÷0.6 (0.1÷6)	MPa (bar)
Sound pressure level [EN-3746-LpA]	75.3	dB(A)
Vibrations	0.07	m/s ²
Height	4750	mm
Length	390	mm
Depth	490	mm
Weight	12/13/14	kg
Weight inclusive of packaging	14/15/16	kg
Package size	580x450x600	mm

200207 = Tank 25÷50 µm

200094 = Tank 50÷125 µm

200208 = Tank 125÷250 µm

ALOX 2001

Sandblaster

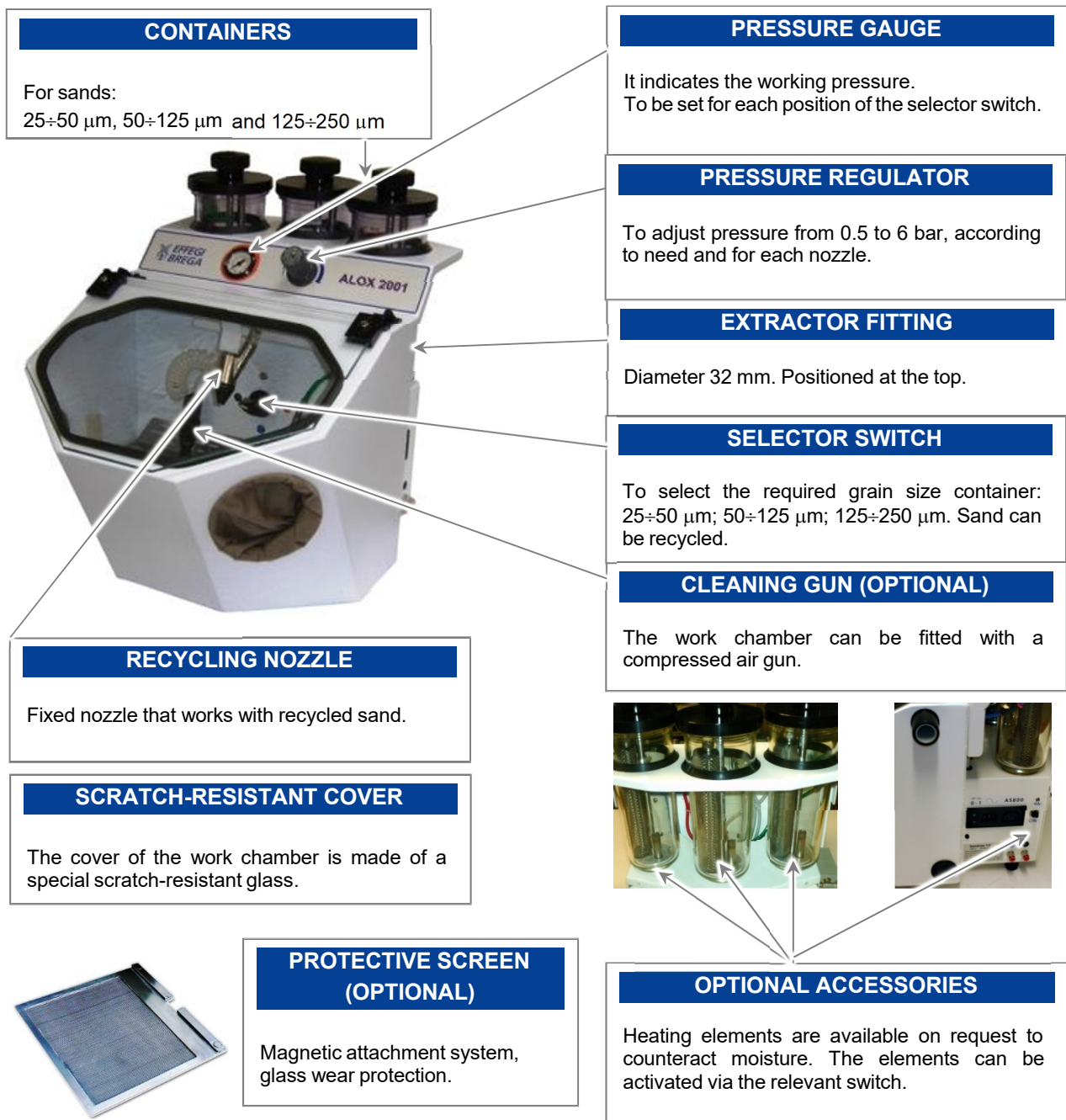
ALOX 2001 is specifically designed and created to meet the needs of dental professionals.

• **ERGONOMIC** • **FUNCTIONAL**

ALOX 2001 features a series of innovative solutions implemented with the aim to optimize usage and rectify any routine inconvenience.

The appliance requires connection to an extractor to remove dust from the work chamber.

On the upper part there is a fitting (on the right-hand or the left-hand side) for connection to the fan already in the laboratory or with **BREGA DUST EXTRACTOR**.



ALOX PLUS

Sandblaster



Item code: 200097

Voltage	230	V
Frequency	50	Hz
Power input	6	W
Maximum air pressure	1.0 (10)	MPa (bar)
Working pressure	0.01÷0.6 (0.1÷6)	MPa (bar)
Sound pressure level [EN-3746-LpA]	75.3	dB(A)
Vibrations	0.07	m/s ²
Height	390	mm
Length	490	mm
Depth	475	mm
Weight	17.5	kg
Weight inclusive of packaging	22.5	kg
Package size	580x450x600	mm

ALOX PLUS

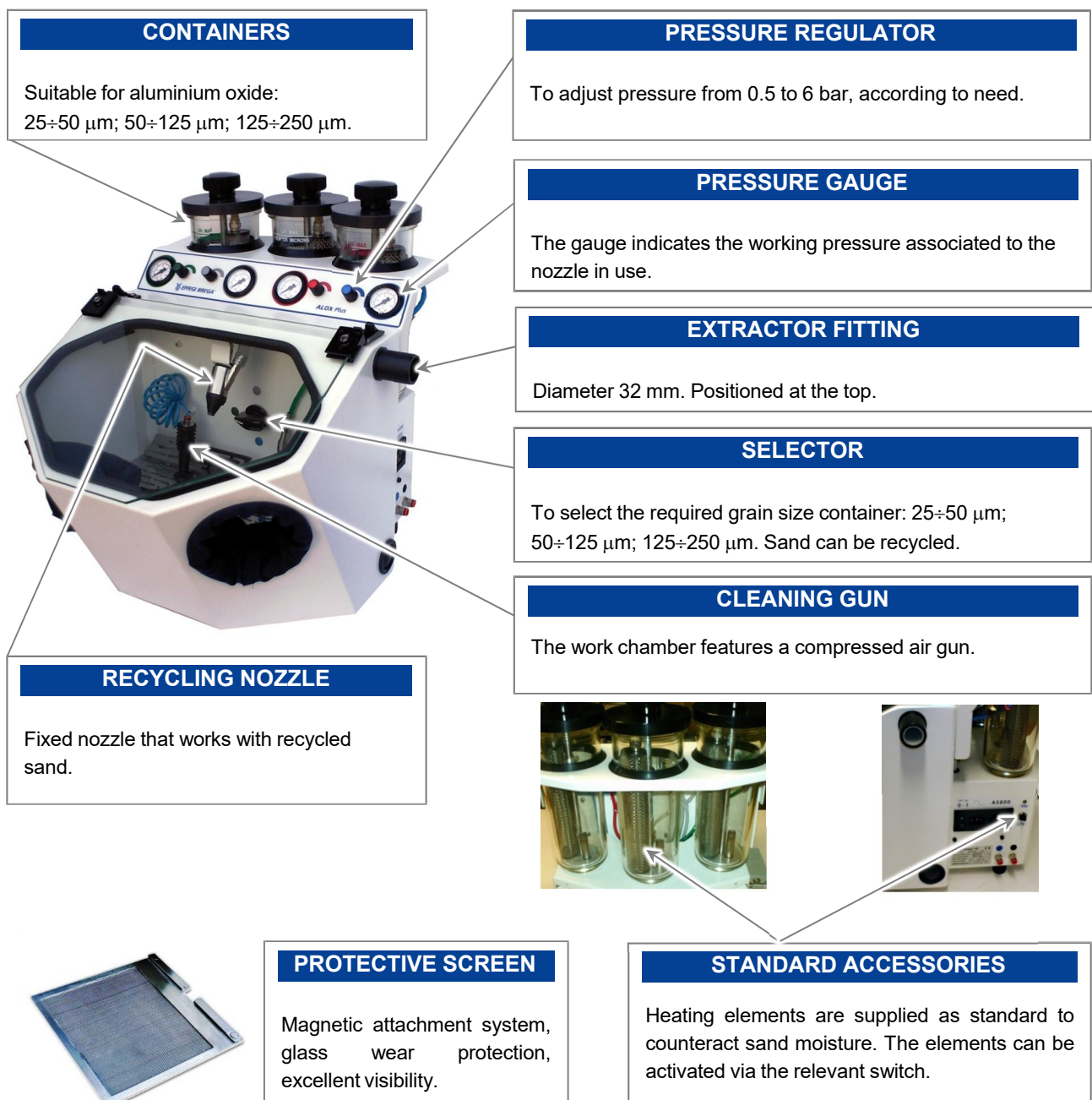
Sandblaster

ALOX PLUS is upgraded from Alox 2001 sandblaster and is specifically designed and created to meet the needs of dental professionals.

• **ERGONOMIC** • **FUNCTIONAL** • **MULTI-EQUIPPED**

ALOX PLUS features a series of innovative solutions implemented with the aim to optimize usage and rectify any routine inconvenience. The appliance requires connection to an extractor to remove dust from the work chamber.

In the upper right there is a fitting for connection to the fan already in the laboratory or with the **AS 800** silent dust extractor of Effegi Brega®.



ATLANTIS MONO

Divesting machine



Item code: 200550

Inner dimensions of working chamber	48x22x36	cm
Min. diameter of cylinders to be divested	25	mm
Max. diameter of cylinders to be divested	75	mm
Diameter of air pipe fittings	8	mm
Connection to the water mains	3/4	Gas
Diameter of drainpipe for connection to sedimentation tank	32	mm
Power rating	1500	W
Voltage	230	V
Frequency	50	Hz
Electrical plug	10÷16	A
Depth	530	mm
Width	520	mm
Height	480	mm
Net weight	48	kg
Weight inclusive of packaging	60	kg
Package size	80x60x51	cm

ATLANTIS MONO

Divesting machine

SAFETY

The glass panel of the chamber is equipped with a safety microswitch that stops the appliance in case of opening.

SIGHT GLASS

Transparent cover through which you can observe the working area. It is kept transparent by means of jets of air.

LAMP

Lighting of the working chamber by means of energy-savings LEDs.

ON-OFF SWITCH

It enables the appliance switching on and signals that it is active and ready for use.

CONNECTION TO ELECTRIC SUPPLY

By means of suitable cable with Shuko plug terminal.

CONNECTION TO WATER MAINS

3/4" front fitting for connection to water supply.

CONNECTION TO PEDAL SWITCH

To connect the pedal switch positioned on the ground.

CONNECTION TO COMPRESSED AIR

Quick coupling for Rilsan pipe with an 8-mm external diameter Min. pressure 2 bar.

GLOVE

It protects the operator's hands while working with the nozzle.

PEDAL

It enables ON-OFF of the pump group when the glass panel is closed.



Calibrated hard stone anti-wear nozzle.

Only one working pressure.

To reduce the disintegrating force of water, it is sufficient to move the nozzle away from its action point. After working a few hours with the appliance, this will become automatic.

ATLANTIS RACK

Divesting machine



Item code: 200554

Inner dimensions of working chamber	480x220x360	mm
Min. diameter of cylinders to be divested	31	mm
Max. diameter of cylinders to be divested	85	mm
Diameter of air pipe fitting	8	mm
Connection to the water mains	3/4	gas
Diameter of drainpipe for connection to sedimentation tank	20	mm
Power rating	1500	W
Voltage	230	V
Frequency	50	Hz
Electrical plug	10÷16	A
Depth	450	mm
Width	500	mm
Height	1320	mm
Net weight	65	kg
Weight inclusive of packaging	75	kg
Package size	600x550x1500	mm

ATLANTIS RACK

Divesting machine

SIGHT GLASS

Transparent cover through which you can observe the working chamber.

PLIERS CONTROL

It allows handling the pliers and the cylinder.

POWER UNIT

It includes:

- Pump unit
- Power control unit
- Control board
- Safety systems
- Water connections
- Air connections
- Timers

LED LAMP

Lighting of the working chamber.

PROTECTIVE GLOVE

It protects the operator's hand while working with the nozzle.

ON-OFF BUTTON

It enables and signals the appliance switching on.

DRAWER

It includes a rack for storing the cylinders pliers.



OUTLET FOR SEDIMENTATION TANK

CONNECTION TO ELECTRIC SUPPLY

CONNECTION TO PEDAL SWITCH

CONNECTION TO COMPRESSED AIR

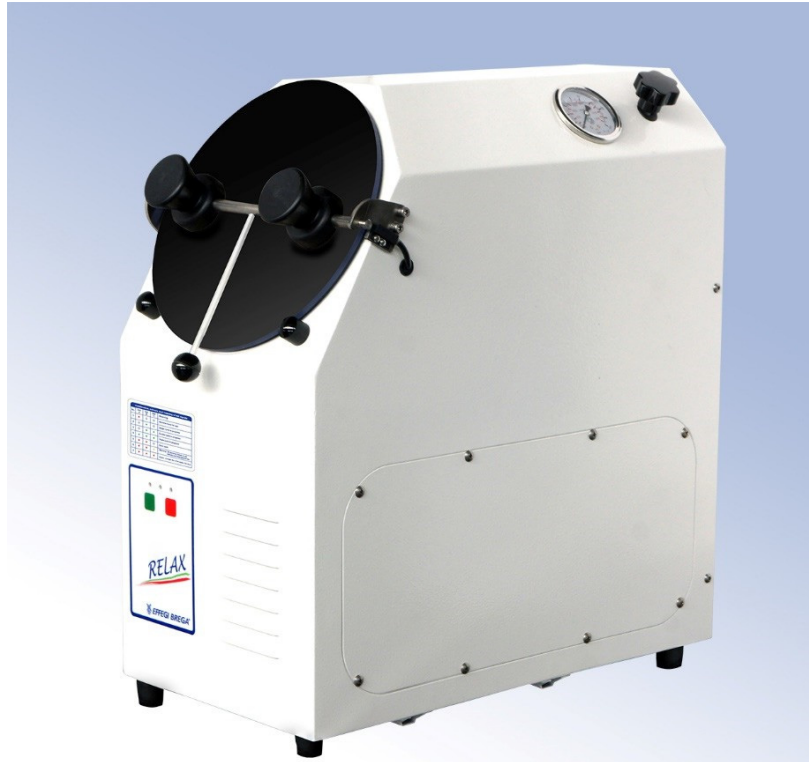
CONNECTION TO WATER MAINS



Precision nozzle for accurate divesting.
Working pressure can be set by foot switch; 3 levels available:
Low – Normal – High.
Wide working chamber.

RELAX

Rotary drum dental cleaner



Item code: 200510

Voltage	230	V
Frequency	50	Hz
Absorbed power	2300	W
Minimum operating temperature	+5	°C
Maximum operating temperature	+40	°C
Water consumption	9	l/min
Adjustable working pressure	1÷10 (10÷100) MPa (bar)	
Sound pressure level [EN-3746-LpA]	80	dB(A)
Maximum number of impression trays	8÷10	
Cycle time	3	min
Height	490	mm
Length	260	mm
Depth	400	mm
Weight	31	kg
Weight inclusive of packaging	34	kg
Package size	400x600x500	mm

RELAX

Rotary drum dental cleaner

The time spent cleaning impression trays in the lab can now be dedicated to other activities thanks to the new "Relax". By means of a strong jet of cold water, this rotary drum dental cleaner can remove alginates from the impression trays and make them as good as new. Convenient, fast and simple: an appliance that will help you save time and money by returning clean and reusable impression trays to your customers. Thanks to the pressure regulator, technopolymer impression trays can be washed.

FUNCTIONS

- Start
- Stop
- 3 LEDs
- 3 different colours for each LED
- Combination of colours and positions to signal, by intuition, the operating or fault status of the appliance.

TRAY WASHER

- Simple: load and press START.
- Easy to use: an electronic card manages all the functions as well as the intuitive led signals.
- Professional: designed for small labs.

PRESSURE REGULATOR

Pressure can be set from 10 to 100 bar.

HATCH DOOR

The operator can load up to a maximum of 8÷10 impression trays.

DEBRIS COLLECTION BASKET

- Waste matter is discharged directly into the sink. To prevent clogging and pollution of the drainage system, the alginates removed from impression trays are retained by the mesh basket.

SIGNALS

The LED lights can signal the following conditions:

- Appliance ready
- Single cycle
- Double cycle
- Triple cycle
- Hatch door not closed
- Pre-warning: service within 30 hours
- Warning: call for service
- Number of working hours



SOFT-RELAX

Rotary drum dental cleaner



Item code: 200560

Voltage	230	V
Frequency	50	Hz
Absorbed power	1800	W
Minimum operating temperature	+5	°C
Maximum operating temperature	+40	°C
Water consumption	9	l/min
Adjustable working pressure	1÷6 (10÷60)	MPa (bar)
Acoustic impact [EN-3746-LpA]	80	dB (A)
Max. quantity of horseshoe-shaped impressions	15÷20	
Washing cycle time	1÷15	min
Height	550	mm
Width	260	mm
Depth	490	mm
Net weight	32	kg
Weight inclusive of packaging	35	kg
Package size	590x460x620	mm

SOFT-RELAX

Rotary drum dental cleaner

Thanks to the new “Soft-Relax” water-soluble support materials can be automatically removed from 3D-printed elements. By means of an appropriate cold water jet, the 3D-printed elements inserted in the cleaner with rotary drum are cleaned and made ready for use. Convenient, fast and simple: an appliance that will help you save time and money by simply using the water of the water system.

CLEANER FOR 3D-PRINTED ELEMENTS

- Simple: load and press START.
- Easy to use: an electronic card manages all the functions as well as the intuitive led signals.
- It gently acts on the materials.

PRESSURE REGULATOR

Pressure can be set from 10 to 60 bar.

HATCH DOOR

The operator can load printed elements of every shape and size.

SIGNALLED ALARMS

The LED lights can signal the following conditions:

- Appliance ready
- Single cycle
- Double cycle
- Triple cycle
- Hatch door not closed
- Warning: service within 30 hours
- Warning: call for service
- Number of working hours

FRONT CONTROL PANEL

Functions:

- ON
- Start
- Stop
- 3 LEDs
- 3 different colours for each LED
- Combination of colours and positions to signal, by intuition, the operating or fault status of the appliance.

TIMER

The machine is equipped with a timer for setting the length of the working cycle.

DEBRIS COLLECTION BASKET

Waste matter is discharged sideways into the sink. To prevent clogging and pollution of the drainage system, it is equipped with a perforated basket which keeps detached materials with dimensions bigger than 3 mm.



AURORE

Rotary drum dental cleaner



Item code: 200520

Voltage	230	V
Frequency	50	Hz
Absorbed power	1800	W
Minimum operating temperature	+5	°C
Maximum operating temperature	+40	°C
Water consumption	9	l/min
Maximum working pressure	9 (90)	MPa (bar)
Sound pressure level [EN-3746-LpA]	80	dB(A)
Maximum number of impression trays	6	
Cycle time	3	min
Height	490	mm
Length	260	mm
Depth	400	mm
Weight	78	kg
Weight inclusive of packaging	94.5	kg
Package size	800x600x660	mm

AURORE

Rotary drum dental cleaner

The time spent cleaning impression trays in the lab can now be dedicated to other activities thanks to the new "Aurore". By means of a strong jet of cold water, this rotary drum dental cleaner can remove alginates from the impression trays and make them as good as new. Convenient, fast and simple: an appliance that will help you save time and money by returning clean and reusable impression trays to your customers.

FUNCTIONS

- Start
- Stop
- 3 LEDs
- 3 different colours for each LED
- Combination of colours and positions to signal, by intuition, the operating conditions of the appliance.

IMPRESSION TRAY CLEANER

- Simple: load and press START.
- Easy to use: an electronic card manages all the functions as well as the intuitive led signals.
- Professional: designed for small labs.



HATCH DOOR

The operator can load up to a maximum of 20 impression trays.

SIGNALS

The LED lights can signal the following conditions:

- Appliance ready
- Single cycle
- Double cycle
- Triple cycle
- Hatch door not closed
- Lower tray not closed
- Inlet water failure
- Water drainage failure
- Pre-warning: service within 100 hours
- Warning: call for service
- Number of working hours

DEBRIS COLLECTION TRAY

- To prevent clogging and pollution of the drainage system, the alginates removed from the impression trays are piled up in the collection tray.

MELANGEUR

Mixer



Item code: 200630

Voltage	230	V
Frequency	50	Hz
Power rating	400	W
Minimum operating temperature	+5	°C
Maximum operating temperature	+40	°C
Small cup	200	ml
Medium cup	500	ml
Big cup	1000	ml
Engine rpm	400	rpm/min
Vacuum	-0.85	bar
Sound pressure level [EN-3746-LpA]	78	dB(A)
Height	320	mm
Length	170	mm
Depth	230	mm
Weight	7.5	kg
Weight inclusive of packaging	10	kg
Package size	470x400x380	mm

MELANGEUR

Mixer

The vacuum mixer is suitable for all the materials used in dental labs. The appliance provides excellent results in terms of homogeneous and bubble-free mixtures for dental plasters and coatings.

Rotation speed is kept constant regardless of material, number and type of cup used.

It features a standard built in wall-mount version or, on request, it can be provided with the specific base to be used as a bench-top model.



VACUUM GAUGE

The gauge indicates the actual vacuum rate.

DISPLAY

The display shows the set time and decreases to zero after starting the cycle.

TIMER

To set the cycle time

VACUUM START – STOP SWITCH

To activate the vacuum pump.

OPTIONAL EQUIPMENT

The mixer is provided in the standard version with the 500 gr. cup and the built in wall-mount fittings.

The 1 kg cup can be supplied on demand.

On the right, a picture of the appliance mounted on a table support (code 182120), provided only on request.



Our steam generators:

MINIVAPOR 200

MINIVAPOR 93

MULTIVAP

MS 2005 - Millenium

VK300 - VK400 - VK500 New

all bear the TÜV – GS certificate.



TÜV: *Technischer Überwachungs-Verein*

TÜV (short for *Technischer Überwachungs-Verein*, "Technical Inspection Association") are German organizations that work to validate the safety of products of all kinds to protect humans and the environment against hazards.

GS: *Geprüfte Sicherheit*

The *Geprüfte Sicherheit* ("Tested Safety") or GS mark is a voluntary certification mark for technical equipment. It indicates that the equipment meets German and, if available, European safety requirements for such devices. The main difference between GS and CE mark is that the compliance with the European safety requirements has been tested and inspected by a state-approved (but independent) body. A CE Mark, in contrast, is issued for the signing of a declaration that the product is in compliance with the standards. The mark is based on the German Equipment and Product Safety Act

ZERTIFIKAT

Nr. Z1A 09 04 69324 004

Zertifikatsinhaber: EFFEGI BREGA S.R.L.

Via Pietro Nenni, 46
29010 Sarmato (PC) PC
ITALIENProduktions-
stätte(n):

69324

Prüfzeichen:



Produkt:

Modell(e):

Kenndaten:

Geprüft nach:

Das Produkt entspricht
gesetztes. Es kann mit
Veränderung der Darst
Zertifikates durch den
angegebenen Zeitpunkt
beachten.

Prüfbericht Nr.:

Gültig bis:

Datum, 2009-05-11

Seite 1 von 1

TÜV SÜD Product Ser



Product Service

ZERTIFIKAT

Nr. Z1A 09 04 69324 003

Zertifikatsinhaber: EFFEGI BREGA S.R.L.

Via Pietro Nenni, 46
29010 Sarmato (PC) PC
ITALIENProduktions-
stätte(n):

69324

Prüfzeichen:



Produkt:

Dampfreiniger
(Laborgeräte)

Modell(e):

Kenndaten:

Geprüft nach:

Das Produkt entspricht den Anfo
gesetztes. Es kann mit den oben
Veränderung der Darstellung de
Zertifikates durch den Zertifikats
angegebenen Zeitpunkt, sofern
beachten.

Prüfbericht Nr.:

Gültig bis:

Datum, 2009-05-11

Seite 1 von 1

TÜV SÜD Product Service GmbH



Product Service

CERTIFICATO

Nr 50 100 5227 - Rev. 06

Si attesta che / This is to certify that

IL SISTEMA QUALITÀ DI
THE QUALITY SYSTEM OF

EFFEGI BREGA S.r.l.

SEDE LEGALE E OPERATIVA:
REGISTERED OFFICE AND OPERATIONAL SITE:VIA MAGELLANO 7
I-29010 SARMATO (PC)E CONFORME AI REQUISITI DELLA NORMA
HAS BEEN FOUND TO COMPLY WITH THE REQUIREMENTS OF

UNI EN ISO 9001:2008

QUESTO CERTIFICATO È VALIDO PER IL SEGUENTE CAMPO DI APPLICAZIONE
THIS CERTIFICATE IS VALID FOR THE FOLLOWING SCOPEProgettazione, fabbricazione e assistenza di apparecchiature
odontotecniche (IAF 18)

Design, manufacture and technical assistance of dental equipment (IAF 18)

Per l'Organismo di Certificazione
For the Certification Body
TÜV Italia S.r.l.

Validità / Validity

Dal / From: 2014-07-01

Al / To: 2017-06-30

SQU N° 045A SSI N° 0050 PRO N° 0618
SGAN N° 0180 ITA N° 0015 ISF N° 0676
SCR N° 000F PRS N° 077C LAB N° 0076Membro degli Accordi di Mutuo Riconoscimento
Signatory of EA, IAF and ILAC Mutual Recognition
Agreements

Data emissione / Printing Date

Claus Spallinger
Direttore Sistemi & Compliance

2014-07-24

PRIMA CERTIFICAZIONE / FIRST CERTIFICATION: 2005-07-25

"LA VALIDITÀ DEL PRESENTE CERTIFICATO È SUBORDINATA A SORVEGLIANZA PERIODICA A 12 MESI E AL RESUME COMPLETO DEL SISTEMA DI
GESTIONE AZIENDALE CON PERIODICITÀ TRIENNALE""THE VALIDITY OF THE PRESENT CERTIFICATE DEPENDS ON THE ANNUAL SURVEILLANCE EVERY 12 MONTHS AND ON THE COMPLETE REVIEW
OF COMPANY'S MANAGEMENT SYSTEM AFTER THREE-YEARS"

CURRENT PRODUCTION



JUNIOR



MINIVAPOR93



MULTIVAP



MS 2005



DIGITAL P



POLYVALENT



PENTATHLON 205



PENTATHLON DGT



SANDY



ALOX PLUS



ATLANTIS MONO



RELAX

EFFEGI BREGA s.r.l.

COSTRUZIONE APPARECCHIATURE ODONTOTECNICHE
Via Ferdinando Magellano, 7 - 29010 Sarmato (PC - Italy)
Tel. +39.0523.887702 - Fax +39.0523.887013
email: commerciale@effegibrega.it - www.effegibrega.it



quality system: UNI EN ISO 9001:2008